



**EVEREST EQUIPMENTS PRIVATE LIMITED**

**HELPING TO BUILD  
THE NATION**



**A PART OF TATER GROUP**

**Everest Equipments Private Limited** since its inception at 2011, have made rapid progress in the field of **Light Construction Equipment and Shuttering and Scaffolding Items.**



## **ABOUT US**

We take pride in introducing ourselves as a prominent manufacturer and supplier of Light Construction Equipment and Shuttering and Scaffolding items. We are serving our clients to build the nation since last 10 years and has now created a reputation in the market for our quality products, timely supplies and after sales service. We are proud to supply our products in numerous Real Estate projects and well as various infrastructure projects. Our quality and timely delivery of products has helped us to serve not only in Domestic Pan India market but also in our neighbouring countries. Regular progress, tailor made products for clients are our USPs. Its been a short but a pleasurable journey to know we are helping to build the nation and we always look forward to cater our clients with their utmost satisfaction.

## **PRODUCT RANGE**




**CONCRETE  
PROCESSING  
RANGE**



**RE- BAR  
PROCESSING  
RANGE**



**MATERIAL  
HANDLING  
RANGE**



**CONST  
LABORATORY  
RANGE**



**SHUTTERING  
SCAFFOLDING**



**CONST  
SAFETY  
ITEMS**

## MINI MOBILE BATCHING

Digital Display

Printing Facility

Load Cell Weighing



MODEL	EMM 800
BATCH CAPACITY	600 LITRES
HOURLY PRODUCTION	9-11 CBM
POWER	10 HP ELECTRIC

## HYDRAULIC CONCRETE MIXER



**STRONG**

**STURDY**

**EASY TO  
OPERATE**

<b>MODEL</b>	<b>10/7 SIMPLE MIXER</b>
<b>BATCH CAPACITY</b>	<b>280 LITRES</b>
<b>HOPPER TYPE</b>	<b>HYDRAULIC HOPPER</b>
<b>POWER</b>	<b>6 HP ENGINE/ELECTRIC</b>



# CONCRETE MIXER

**STRONG**

**STURDY**

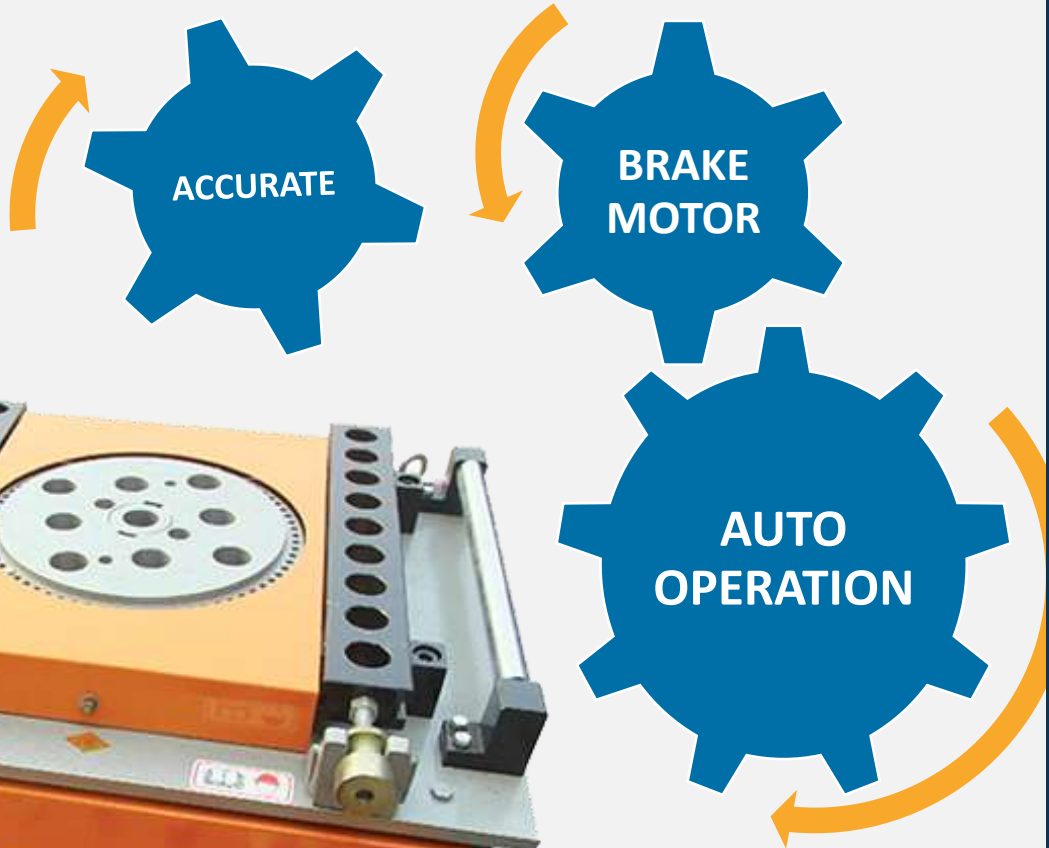
**EASY TO  
OPERATE**



<b>MODEL</b>	<b>10/7 SIMPLE MIXER</b>
<b>BATCH CAPACITY</b>	<b>280 LITRES</b>
<b>HOPPER TYPE</b>	<b>WITHOUT HOPPER</b>
<b>POWER</b>	<b>6 HP ENGINE/ELECTRIC</b>



# TMT BAR BENDING MACHINE



MODEL	EBB
BENDING SCOPE	> 32MM & > 40 MM
POWER	5 Hp BRAKE MOTOR
VOLTAGE	440V/ 3 pH/ 50 Hz

# TMT BAR CUTTING MACHINE

FOOT & HAND PEDAL

EASY TO OPERATE



MODEL	EBC
CUTTING SCOPE	> 32MM & > 40 MM
POWER	5 Hp MOTOR
VOLTAGE	440V/ 3 pH/ 50 Hz



## BUILDERS' HOIST



<b>MODEL</b>	<b>EBH</b>
<b>WINCH CAPACITY</b>	<b>1, 1.5 &amp; 2 TON</b>
<b>POWER OPTION</b>	<b>ELECTRICAL &amp; ENGINE</b>
<b>MAST TYPE</b>	<b>BOX TYPE OF MS ANGLE</b>

## ADJUSTABLE PROPS ACROW SPAN



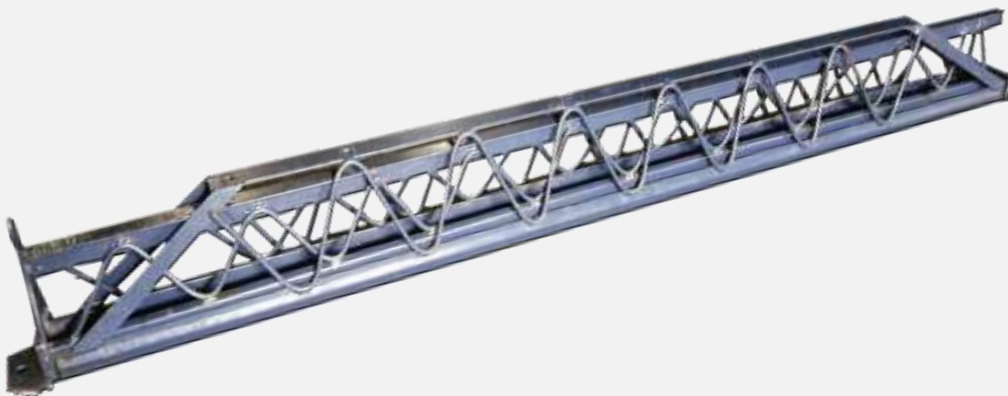
STRONG

STURDY

ECONOMICAL

Made of 60.3 mm OD and 48.3 mm OD MS  
Black pipe, ERW, ISI Marked

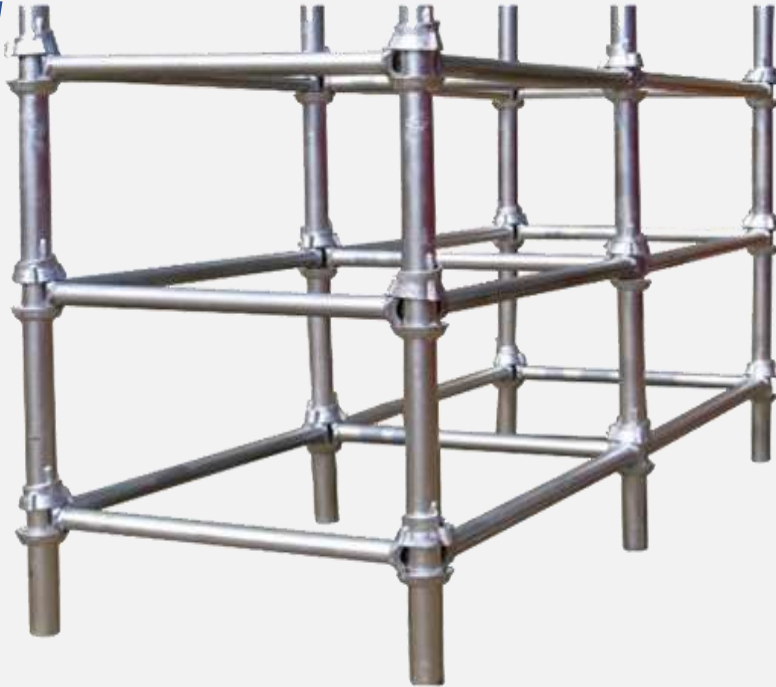
Size: Different Size to cover from 1m to 5.5m



Having exception load bearing capacity for its  
weight. Robust made with heavy design

Size: Different size to cover from 2m to 5.5 m

## CUP LOCK SYSTEMS



EASY TO ERECT

EASY  
HANDLING

MULTI-  
PURPOSE

Made of 48.3 mm (40mm NB) MS Pipe fitted with accessories and is modular scaffolding for quick fastening in Vertical as well as Horizontal manner.

**Sizes Available:** Can be made in tailor – made sizes.



# WALKWAY PLATFORM



MS Platform are made with 25 X 25 mm Square Pipes. Sizes available as per required. Also can be provided with Hook at both the ends.

LIGHT  
WEIGHT

STRONG  
HOLD

STURDY



# CLAMPS AND JACKS



STRONG

HEAVY

DURABLE





# ANGLE FRAMES

Made as per specification or clients requirements from MS Angle of 50 X 50 X 6 or 65 X 65 X 6 with utmost care to provide strong support for the structure.



HEAVY  
WEIGHT  
CAPCITY

STURDY

STRONG HOLD

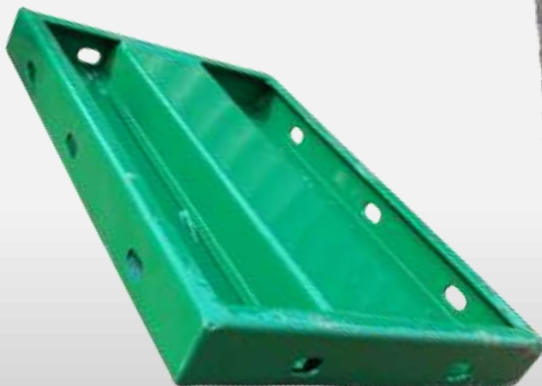




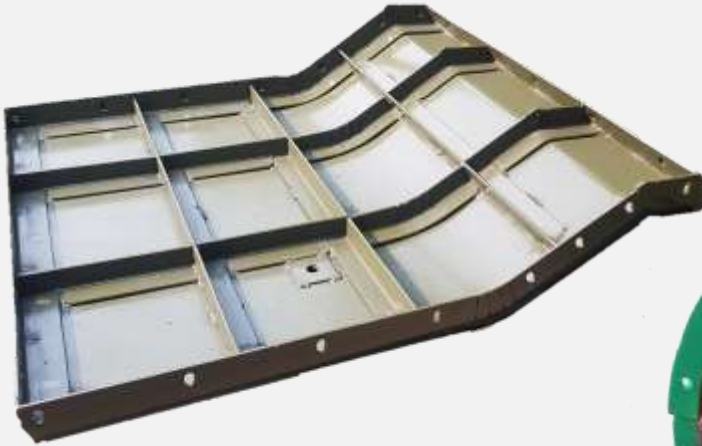
# SHUTTERING & HAUNCH PLATE



We specialise in manufacturing tailor – made shuttering plates for our clients providing the right quantity, quality at the most competitive prices.



## SPECIAL SHUTTERING PLATE



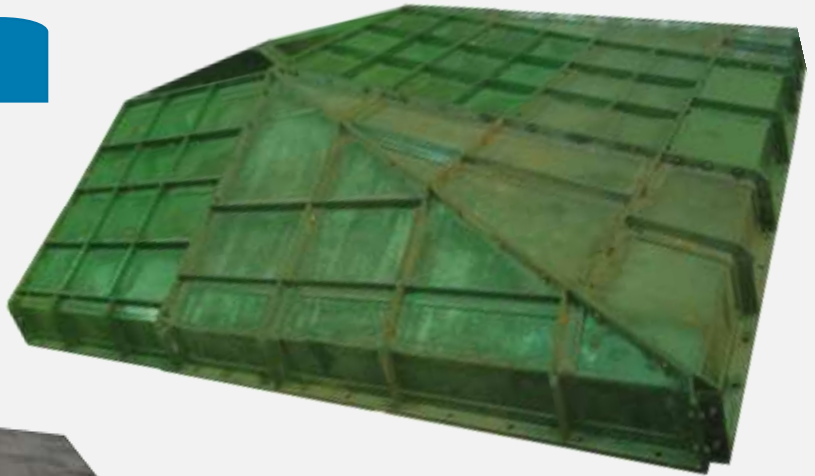
Doing tailor made shuttering for any structure is our main forte. Our team provides complete solution including calculation, designing and fabrication

**YOUR DESIGN = OUR PRODUCTION**

# SPECIAL SHUTTERING PLATES

TAILOR MADE

DESIGNING



FABRICATION



Doing tailor made shuttering for any structure is our main forte. Our team provides complete solution including calculation, designing and fabrication

**YOUR DESIGN = OUR PRODUCTION**

## SAFETY ITEMS



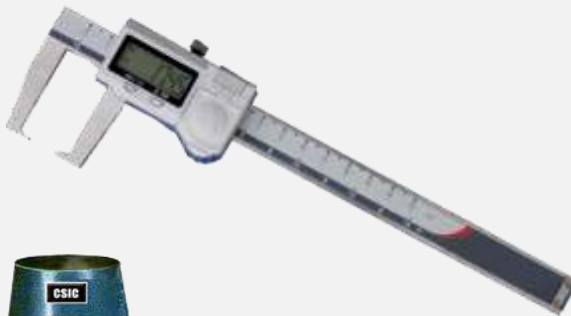
We provide wide range of items required for safety at the site conditions. . Most of the items are readily available with us. Our Quality is Guaranteed and Certified.





# LABORATORY ITEMS

We provide wide range of items required in construction laboratory set up. Most of the items are readily available with us. Our Quality is guaranteed and Certified.



# STEEL FIBERS

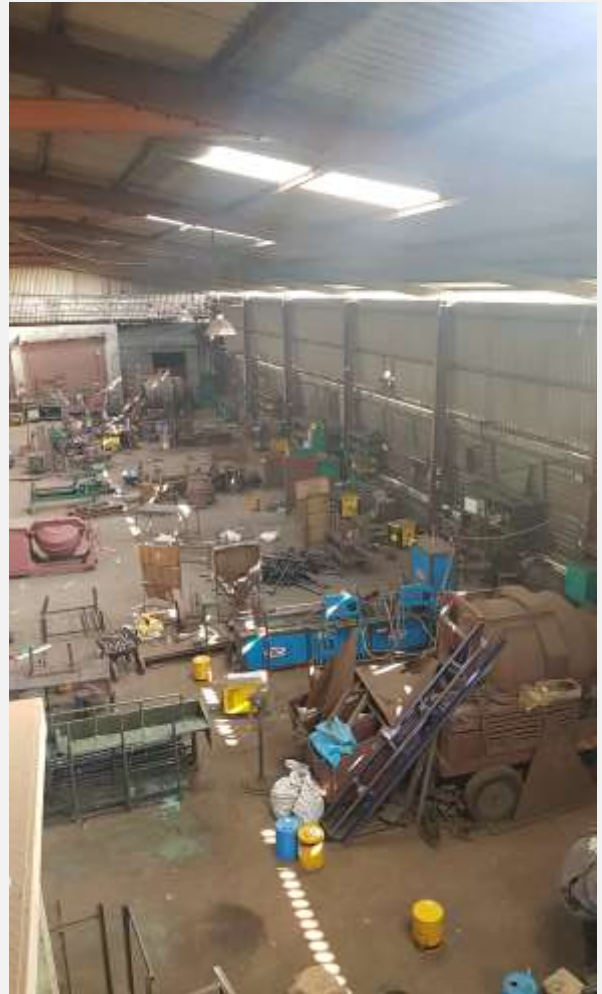


Steel Fiber reinforced concrete with SHAKTIMAN Steel Fibers gives concrete its high performance because the steel fibers are homogeneously distributed. Thus contributing to considerably increased load bearing capacity





# OUR INFRASTRUCTURE



# SITE PHOTOS





# SITE PHOTOS



# HAPPY CLIENTS

Name of Clients	Location
TATA Projects Limited	Hyderabad, Telengana
Megha Engineering and Infrastructures Ltd	Hyderabad, Telengana
Ashoka Buildcon Limited	Mumbai, Maharastra
Bridge and Roof Co. (India) Limited	Kolkata, WB
Shyamsree Infrastructure ( Shyam Steel Grp)	Kolkata, WB
ISKCON TEMPLE	Mayapur, WB
Pranami Estates Private Limited	Ranchi, Jharkhand
Ram Kripal Singh Construction Pvt Ltd	Ranchi, Jharkhand
Bharuka Construction	Aurangabad, Maharastra
Vee Jay Engineers	Jammu
Nipani Engineers	Raipur, Chattisgarh
Saakaar Construction (P) Ltd	Patna, Bihar
CCCL	Chennai, Tamil Nadu
Dasatahi Naik and Engineers Pvt Ltd	Bhubaneswar
MS Infrastructure Private Limited	Cuttack
Gupteswar Construction	Koraput
Relible Hi- Tech Infrastructure Pvt Ltd	Rourkela
Jyoti Construction	Barbil
Hi-Tech Engineering	Kathmandu, Nepal
H G Ent Pvt Ltd	Kathmandu, Nepal
Marushin Sitaka	Bhutan

## CONTACT US

### HEAD OFFICE:

Suite: 203A, South Block  
6 Waterloo Street,  
Kolkata – 700025

### Branches :

Cuttack, Odisha  
Patna, Bihar

### Works:

Mahabir Complex  
N.T. Road ( Old Delhi Highway)  
Baidyabati , Hooghly – 712222  
West Bengal



[sales@everestekl.com](mailto:sales@everestekl.com)  
[info@everestekl.com](mailto:info@everestekl.com)



[www.everestekl.com](http://www.everestekl.com)



9163884442  
033-22622409